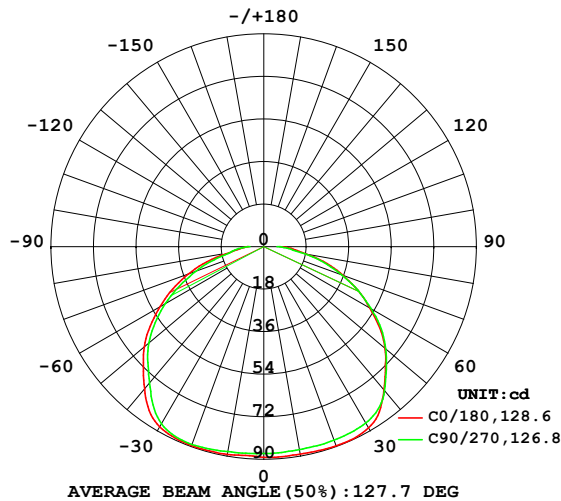


## LUMINAIRE PHOTOMETRIC TEST REPORT

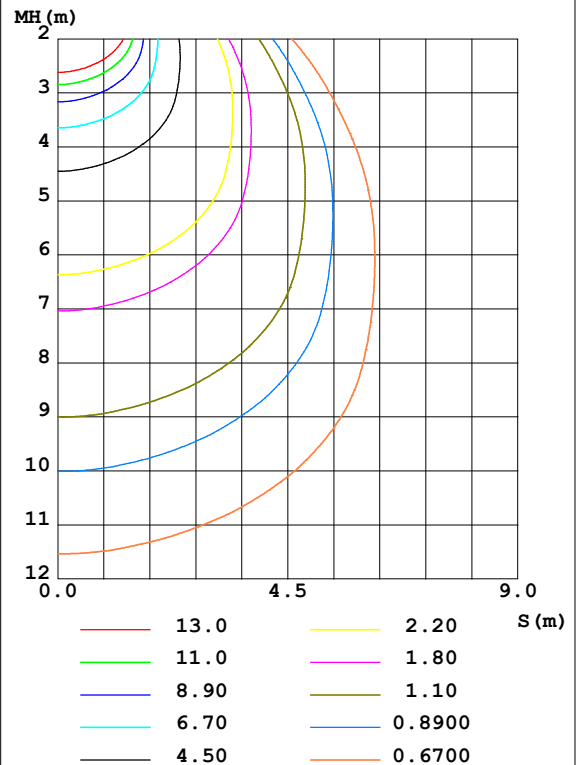
Test:U:0V I:0A P:0W PF:0.0000 Freq:0Hz Lamp Flux:313.505x1 lm		
NAME:	TYPE:	WEIGHT:
SPEC.:	DIM.: 100*100*90	SERIAL No.:
MFR.:	SUR.:3.14*0.035*0.035	Shielding Angle:

DATA OF LAMP		PHOTOMETRIC DATA			
MODEL		Imax(cd)	89.71	S/MH(C0/180)	1.45
NOMINAL POWER(W)	/	LOR(%)	100.0	S/MH(C90/270)	1.43
RATED VOLTAGE(V)	230.0	TOTAL FLUX(lm)	313.50	$\eta$ UP,DN(C0-180)	0.0,51.0
NOMINAL FLUX(lm)	313.505	CIE CLASS	DIRECT	$\eta$ UP,DN(C180-360)	0.0,49.0
LAMPS INSIDE	1	$\eta$ up(%)	0.0	CIBSE SHR NOM	1.50
TEST VOLTAGE(V)	230.0	$\eta$ down(%)	100.0	CIBSE SHR MAX	1.55

LUMINOUS INTENSITY DISTRIBUTION DIAGRAM



C0 PLANE ISOLUX DIAGRAM (UNIT:lx)



C Range: 0 - 360DEG  
C Interval: 22.5DEG  
Test Speed: HIGH  
Temperature:25.3DEG  
Operators:  
Test Date:2025-11-27

$\gamma$  Range: 0 - 90DEG  
 $\gamma$  Interval: 1.0DEG  
Test System:EVERFINE GO-2000A\_V1 SYSTEM V2.0.406.10  
Humidity:65.0%  
Test Distance:11.700m [K=1.0000]  
Remarks:

## ZONAL FLUX DIAGRAM

## ZONAL FLUX DIAGRAM:

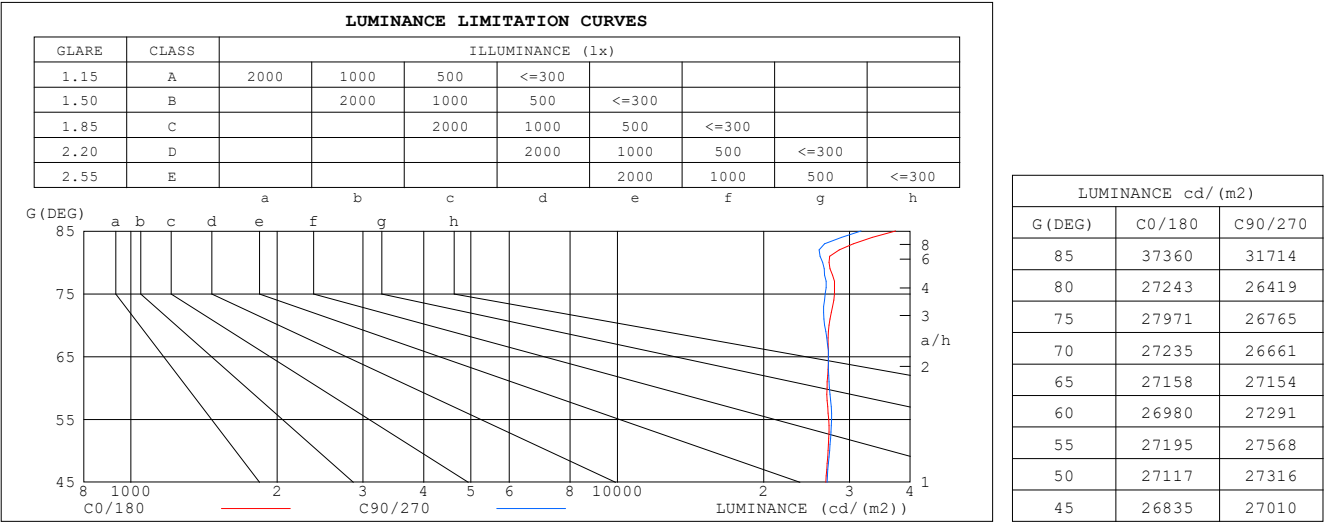
$\gamma$	C0	C45	C90	C135	C180	C225	C270	C315	$\gamma$	$\Phi$ zone	$\Phi$ total	%lum,lamp
10	89.12	88.00	87.15	86.65	89.20	88.91	88.05	87.23	0- 10	8.374	8.374	2.67,2.67
20	89.65	88.13	87.11	86.61	89.53	89.37	89.04	87.94	10- 20	24.96	33.33	10.6,10.6
30	88.56	87.20	86.25	85.43	88.01	87.18	86.58	86.03	20- 30	40.61	73.95	23.6,23.6
40	79.14	79.91	79.44	77.56	78.48	76.44	75.23	75.60	30- 40	52.00	125.9	40.2,40.2
50	66.93	68.05	67.42	65.57	66.00	64.24	63.49	63.82	40- 50	55.26	181.2	57.8,57.8
60	51.80	52.99	52.40	50.21	50.60	48.39	48.02	48.88	50- 60	52.13	233.3	74.4,74.4
70	35.77	35.74	35.02	33.30	33.89	31.26	30.67	32.20	60- 70	41.57	274.9	87.7,87.7
80	18.17	18.24	17.62	16.28	14.90	14.36	14.39	15.50	70- 80	26.27	301.2	96.1,96.1
90	6.830	8.728	5.576	7.723	6.409	6.332	5.954	7.723	80- 90	12.33	313.5	100,100
100									90-100			
110									100-110			
120									110-120			
130									120-130			
140									130-140			
150									140-150			
160									150-160			
170									160-170			
180									170-180			
DEG	LUMINOUS INTENSITY:cd									UNIT:lm		

C Range: 0 - 360DEG  
 C Interval: 22.5DEG  
 Test Speed: HIGH  
 Temperature:25.3DEG  
 Operators:  
 Test Date:2025-11-27

$\gamma$  Range: 0 - 90DEG  
 $\gamma$  Interval: 1.0DEG  
 Test System:EVERFINE GO-2000A\_V1 SYSTEM V2.0.406.10  
 Humidity:65.0%  
 Test Distance:11.700m [K=1.0000]  
 Remarks:

LUMINANCE LIMITATION CURVES

Test:U:0V I:0A P:0W PF:0.0000 Freq:0Hz Lamp Flux:313.505x1 lm		
NAME:	TYPE:	WEIGHT:
SPEC.:	DIM.: 100*100*90	SERIAL No.:
MFR.:	SUR.:3.14*0.035*0.035	Shielding Angle:



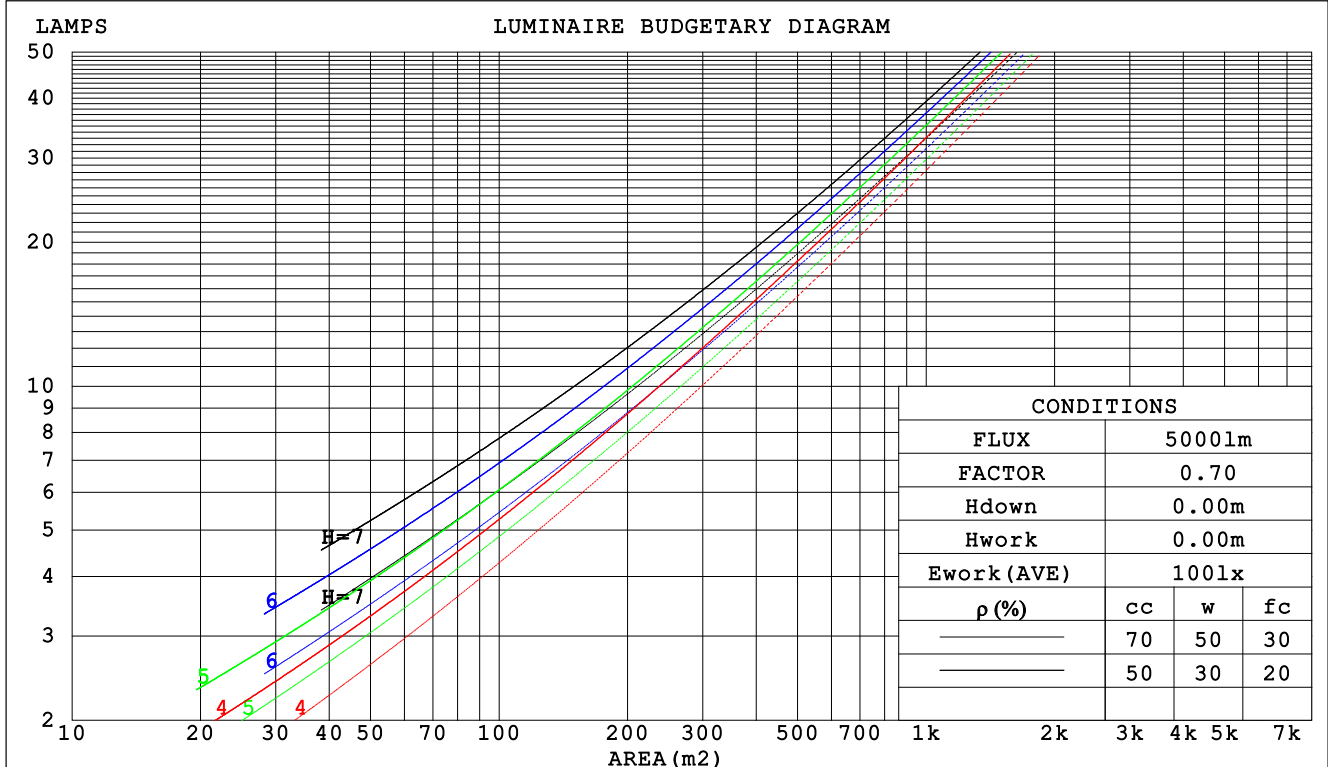
C Range: 0 - 360DEG  
C Interval: 22.5DEG  
Test Speed: HIGH  
Temperature:25.3DEG  
Operators:  
Test Date:2025-11-27

γ Range: 0 - 90DEG  
γ Interval: 1.0DEG  
Test System:EVERFINE GO-2000A\_V1 SYSTEM V2.0.406.10  
Humidity:65.0%  
Test Distance:11.700m [K=1.0000]  
Remarks:

## CU AND LUMINAIRE BUDGETARY ESTIMATE DIAGRAM

Test:U:0V I:0A P:0W PF:0.0000 Freq:0Hz Lamp Flux:313.505x1 lm		
NAME:	TYPE:	WEIGHT:
SPEC.:	DIM.: 100*100*90	SERIAL No.:
MFR.:	SUR.:3.14*0.035*0.035	Shielding Angle:

$\rho_{cc}$	80%			70%			50%			30%			10%			0
$\rho_w$	50%	30%	10%	50%	30%	10%	50%	30%	10%	50%	30%	10%	50%	30%	10%	0
$\rho_{fc}$	20%			20%			20%			20%			20%			0
RCR	RCR:Room Cavity Ratio			Coefficients of Utilization(CU)												
0.0	1.19	1.19	1.19	1.16	1.16	1.16	1.11	1.11	1.11	1.06	1.06	1.06	1.02	1.02	1.02	.00
1.0	1.02	.97	.93	.00	.95	.92	.96	.92	.89	.92	.89	.86	.88	.86	.83	.81
2.0	.88	.81	.75	.86	.79	.74	.83	.77	.72	.79	.74	.70	.76	.72	.69	.66
3.0	.77	.68	.61	.75	.67	.61	.72	.65	.60	.69	.63	.58	.67	.62	.57	.55
4.0	.68	.58	.51	.66	.58	.51	.64	.56	.50	.61	.55	.49	.59	.53	.49	.46
5.0	.60	.51	.44	.59	.50	.43	.57	.49	.43	.55	.48	.42	.53	.47	.42	.40
6.0	.54	.45	.38	.53	.44	.38	.51	.43	.37	.49	.42	.37	.48	.41	.37	.34
7.0	.49	.40	.33	.48	.39	.33	.46	.38	.33	.45	.38	.33	.43	.37	.32	.30
8.0	.44	.35	.29	.44	.35	.29	.42	.35	.29	.41	.34	.29	.40	.33	.29	.27
9.0	.41	.32	.26	.40	.32	.26	.39	.31	.26	.38	.31	.26	.37	.30	.26	.24
10.0	.37	.29	.24	.37	.29	.24	.36	.29	.24	.35	.28	.23	.34	.28	.23	.21



C Range: 0 - 360DEG  
C Interval: 22.5DEG  
Test Speed: HIGH  
Temperature:25.3DEG  
Operators:  
Test Date:2025-11-27

$\gamma$  Range: 0 - 90DEG  
 $\gamma$  Interval: 1.0DEG  
Test System:EVERFINE GO-2000A\_V1 SYSTEM V2.0.406.10  
Humidity:65.0%  
Test Distance:11.700m [K=1.0000]  
Remarks:

## WEC AND CCEC

Test:U:0V I:0A P:0W PF:0.0000 Freq:0Hz Lamp Flux:313.505x1 lm									
NAME:				TYPE:			WEIGHT:		
SPEC.:				DIM.: 100*100*90			SERIAL No.:		
MFR.:				SUR.:3.14*0.035*0.035			Shielding Angle:		

pcc	80%			70%			50%			30%			10%			0	
pw	50%	30%	10%	50%	30%	10%	50%	30%	10%	50%	30%	10%	50%	30%	10%	0	
pfc	20%			20%			20%			20%			20%			0	
RCR	RCR:Room Cavity Ratio						Wall Exitance Coefficients(WEC)										
0.0																	
1.0	.343	.195	.062	.336	.192	.061	.322	.185	.059	.310	.179	.057	.299	.173	.056		
2.0	.314	.172	.053	.307	.169	.052	.295	.164	.051	.284	.160	.050	.274	.155	.049		
3.0	.286	.152	.046	.281	.150	.045	.270	.146	.044	.260	.143	.044	.251	.139	.043		
4.0	.262	.136	.040	.257	.134	.040	.247	.131	.039	.239	.128	.039	.231	.125	.038		
5.0	.240	.122	.035	.236	.121	.035	.228	.119	.035	.220	.116	.035	.213	.114	.034		
6.0	.222	.111	.032	.218	.110	.032	.211	.108	.031	.204	.106	.031	.197	.104	.031		
7.0	.206	.102	.029	.202	.101	.029	.196	.099	.028	.189	.097	.028	.184	.095	.028		
8.0	.192	.094	.026	.188	.093	.026	.183	.091	.026	.177	.090	.026	.172	.088	.026		
9.0	.179	.087	.024	.176	.086	.024	.171	.085	.024	.166	.083	.024	.161	.082	.024		
10.0	.168	.081	.022	.165	.080	.022	.161	.079	.022	.156	.078	.022	.152	.076	.022		

pcc	80%			70%			50%			30%			10%			0	
pw	50%	30%	10%	50%	30%	10%	50%	30%	10%	50%	30%	10%	50%	30%	10%	0	
pfc	20%			20%			20%			20%			20%			0	
RCR	RCR:Room Cavity Ratio						Ceiling Cavity Exitance Coefficients(CCEC)										
0.0	.190	.190	.190	.163	.163	.163	.111	.111	.111	.064	.064	.064	.020	.020	.020		
1.0	.183	.156	.132	.156	.134	.113	.107	.092	.078	.062	.053	.046	.020	.017	.015		
2.0	.175	.132	.095	.150	.113	.082	.103	.078	.058	.059	.046	.034	.019	.015	.011		
3.0	.168	.114	.072	.144	.099	.062	.099	.069	.044	.057	.040	.026	.018	.013	.008		
4.0	.160	.101	.056	.137	.088	.049	.094	.061	.035	.055	.036	.020	.018	.012	.007		
5.0	.152	.091	.046	.131	.079	.040	.090	.055	.028	.052	.032	.017	.017	.011	.005		
6.0	.145	.083	.038	.125	.072	.033	.086	.050	.023	.050	.029	.014	.016	.010	.005		
7.0	.138	.076	.032	.119	.066	.028	.082	.046	.020	.048	.027	.012	.015	.009	.004		
8.0	.131	.070	.028	.113	.061	.024	.078	.043	.017	.046	.025	.010	.015	.008	.003		
9.0	.125	.065	.025	.108	.057	.021	.075	.040	.015	.043	.023	.009	.014	.008	.003		
10.0	.119	.061	.022	.103	.053	.019	.071	.037	.014	.042	.022	.008	.013	.007	.003		

C Range: 0 - 360DEG  
 C Interval: 22.5DEG  
 Test Speed: HIGH  
 Temperature:25.3DEG  
 Operators:  
 Test Date:2025-11-27

γ Range: 0 - 90DEG  
 γ Interval: 1.0DEG  
 Test System:EVERFINE GO-2000A\_V1 SYSTEM V2.0.406.10  
 Humidity:65.0%  
 Test Distance:11.700m [K=1.0000]  
 Remarks:

UGR(Unified Glare Rating) Table

Test:U:0V I:0A P:0W PF:0.0000 Freq:0Hz Lamp Flux:313.505x1 lm										
NAME:					TYPE:			WEIGHT:		
SPEC.:					DIM.: 100*100*90			SERIAL No.:		
MFR.:					SUR.:3.14*0.035*0.035			Shielding Angle:		
ceiling/cavity	0.7	0.7	0.5	0.5	0.3	0.7	0.7	0.5	0.5	0.3
walls	0.5	0.3	0.5	0.3	0.3	0.5	0.3	0.5	0.3	0.3
working plane	0.2	0.2	0.2	0.2	0.2	0.2	0.2	0.2	0.2	0.2
Room dimensions	Viewed crosswise					Viewed endwise				
x = 2H y = 2H	24.6	26.2	24.9	26.4	26.6	24.6	26.2	24.9	26.4	26.6
3H	26.4	27.9	26.7	28.1	28.4	26.4	27.8	26.7	28.1	28.3
4H	27.2	28.6	27.5	28.9	29.1	27.1	28.5	27.5	28.8	29.1
6H	27.9	29.2	28.2	29.5	29.8	27.8	29.1	28.1	29.4	29.7
8H	28.1	29.4	28.5	29.7	30.0	28.0	29.3	28.3	29.6	29.9
12H	28.5	29.7	28.8	30.0	30.3	28.2	29.5	28.6	29.8	30.1
4H 2H	25.3	26.7	25.6	27.0	27.2	25.3	26.7	25.6	27.0	27.2
3H	27.3	28.5	27.6	28.8	29.1	27.2	28.5	27.6	28.8	29.1
4H	28.3	29.4	28.6	29.7	30.1	28.2	29.3	28.5	29.6	30.0
6H	29.1	30.1	29.5	30.4	30.8	29.0	30.0	29.4	30.3	30.7
8H	29.4	30.4	29.8	30.7	31.1	29.3	30.2	29.7	30.6	31.0
12H	29.8	30.7	30.2	31.1	31.5	29.6	30.4	30.0	30.8	31.2
8H 4H	28.6	29.6	29.0	29.9	30.3	28.5	29.5	29.0	29.9	30.2
6H	29.6	30.4	30.1	30.8	31.3	29.5	30.3	30.0	30.7	31.2
8H	30.1	30.8	30.6	31.2	31.7	29.9	30.7	30.4	31.1	31.5
12H	30.7	31.3	31.1	31.7	32.2	30.4	31.0	30.9	31.5	32.0
12H 4H	28.7	29.5	29.1	29.9	30.3	28.6	29.5	29.0	29.8	30.3
6H	29.7	30.4	30.2	30.9	31.3	29.6	30.3	30.1	30.8	31.2
8H	30.3	30.9	30.7	31.3	31.8	30.1	30.7	30.6	31.2	31.7
Variations with the observer position at spacings:										
S = 1.0H	+ 0.1 / - 0.2					+ 0.1 / - 0.2				
1.5H	+ 0.2 / - 0.3					+ 0.2 / - 0.3				
2.0H	+ 0.2 / - 0.4					+ 0.2 / - 0.4				

CIE Pub.117, 313.5 lm Total Lamp Luminous Flux Corrected ( $8\log(F/F_0) = -4.0$ )

C Range: 0 - 360DEG  
 C Interval: 22.5DEG  
 Test Speed: HIGH  
 Temperature:25.3DEG  
 Operators:  
 Test Date:2025-11-27

γ Range: 0 - 90DEG  
 γ Interval: 1.0DEG  
 Test System:EVERFINE GO-2000A\_V1 SYSTEM V2.0.406.10  
 Humidity:65.0%  
 Test Distance:11.700m [K=1.0000]  
 Remarks:

## UTILIZATION FACTORS TABLE

Test:U:0V I:0A P:0W PF:0.0000 Freq:0Hz Lamp Flux:313.505x1 lm		
NAME:	TYPE:	WEIGHT:
SPEC.:	DIM.: 100*100*90	SERIAL No.:
MFR.:	SUR.:3.14*0.035*0.035	Shielding Angle:

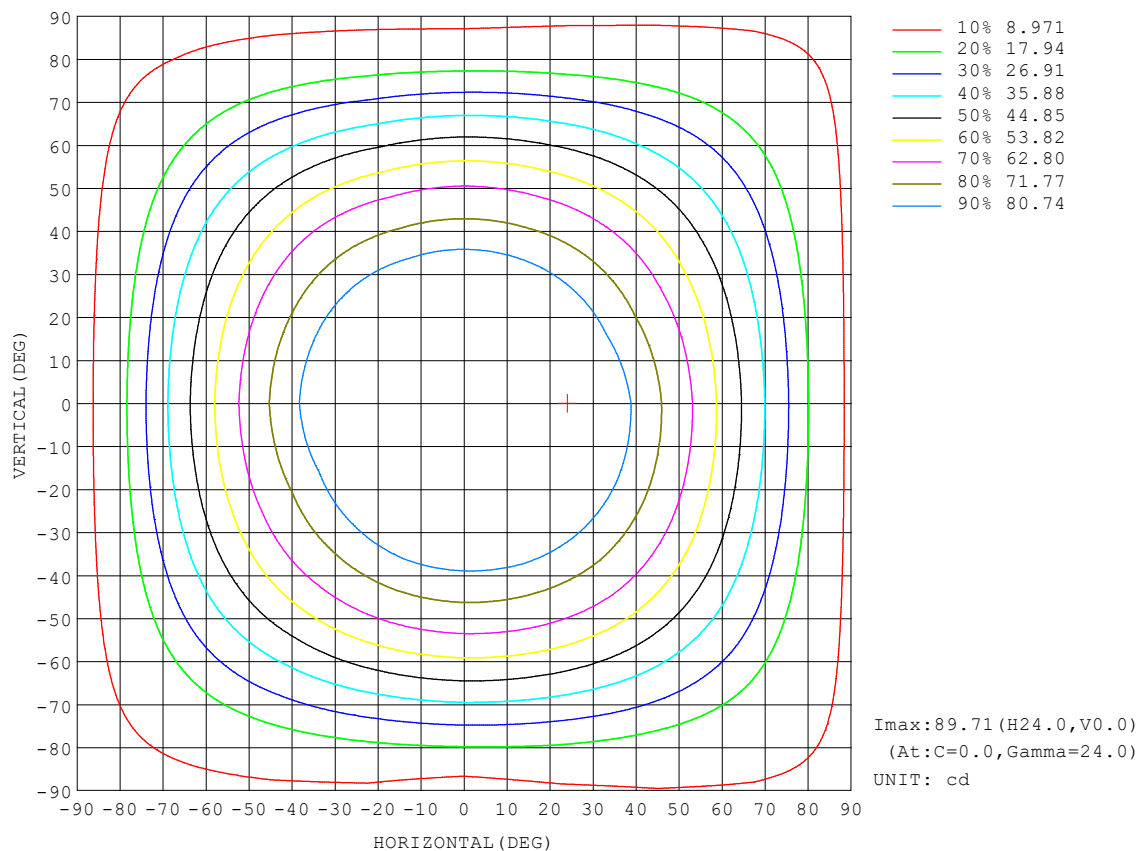
REFLECTANCE										
Ceiling	0.8	0.8	0.8	0.7	0.7	0.7	0.5	0.5	0.5	0
Walls	0.7	0.5	0.3	0.7	0.5	0.3	0.7	0.5	0.3	0
Working plane	0.2	0.2	0.2	0.2	0.2	0.2	0.2	0.2	0.2	0
ROOM INDEX	UTILIZATION FACTORS (PERCENT) $k(RI) \times RCR = 5$									
$k = 0.60$	55	43	36	54	43	36	53	42	35	29
0.80	65	53	45	64	52	45	62	52	45	37
1.00	73	62	54	72	61	54	70	63	53	46
1.25	81	69	62	79	69	61	76	67	61	53
1.50	86	75	68	84	74	67	81	72	66	58
2.00	93	84	77	91	82	76	87	80	74	66
2.50	97	89	82	95	87	81	91	84	79	70
3.00	100	93	87	98	91	86	94	88	84	75
4.00	105	98	93	102	97	92	98	93	89	80
5.00	107	102	97	105	100	96	100	96	93	83
ROOM INDEX	UF (total)									Direct
According to DIN EN 13032-2 2004			Suspended					SHRNOM = 1.25		

C Range: 0 - 360DEG  
 C Interval: 22.5DEG  
 Test Speed: HIGH  
 Temperature: 25.3DEG  
 Operators:  
 Test Date: 2025-11-27

$\gamma$  Range: 0 - 90DEG  
 $\gamma$  Interval: 1.0DEG  
 Test System: EVERFINE GO-2000A\_V1 SYSTEM V2.0.406.10  
 Humidity: 65.0%  
 Test Distance: 11.700m [K=1.0000]  
 Remarks:

## ISOCANDELA DIAGRAM

Test:U:0V I:0A P:0W PF:0.0000 Freq:0Hz Lamp Flux:313.505x1 lm		
NAME:	TYPE:	WEIGHT:
SPEC.:	DIM.: 100*100*90	SERIAL No.:
MFR.:	SUR.:3.14*0.035*0.035	Shielding Angle:



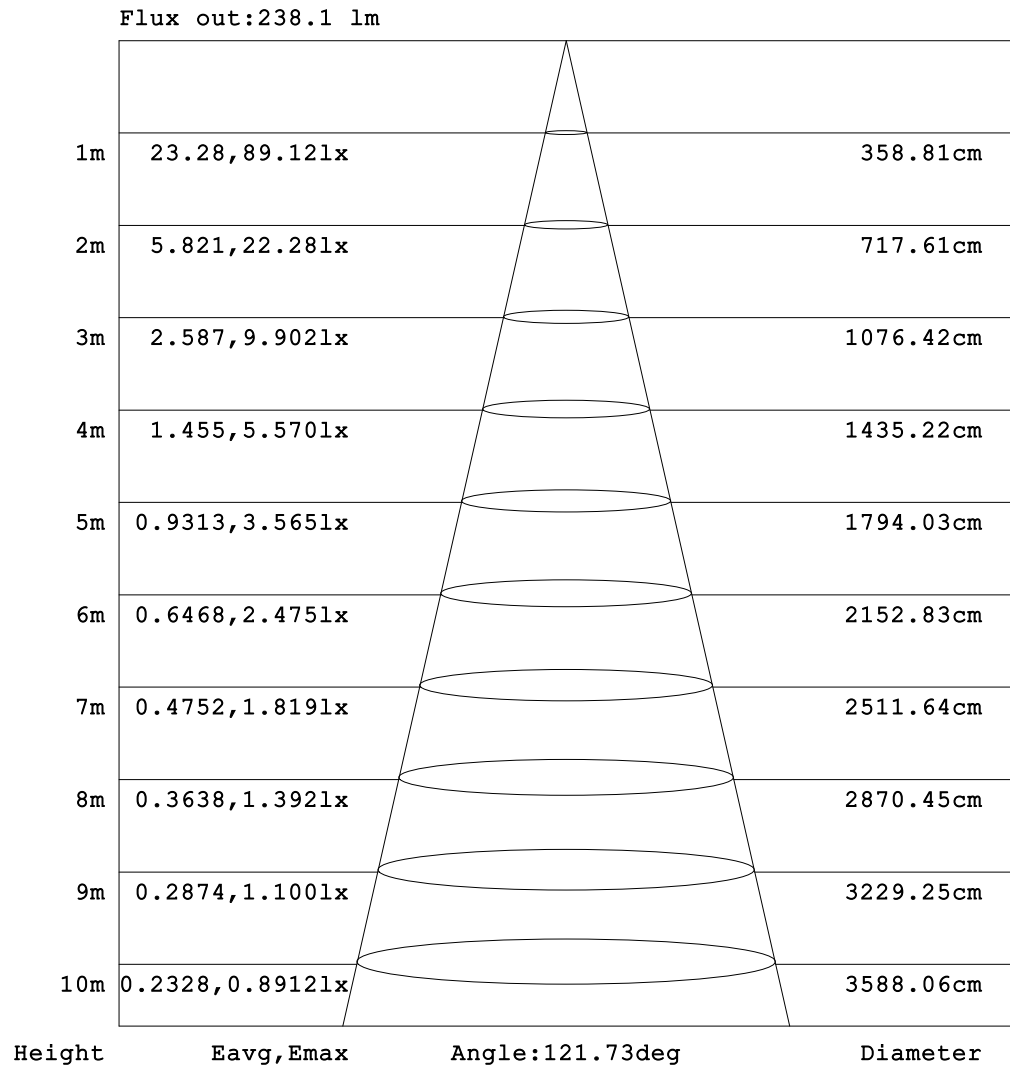
C Range: 0 - 360DEG  
C Interval: 22.5DEG  
Test Speed: HIGH  
Temperature:25.3DEG  
Operators:  
Test Date:2025-11-27

$\gamma$  Range: 0 - 90DEG  
 $\gamma$  Interval: 1.0DEG  
Test System:EVERFINE GO-2000A\_V1 SYSTEM V2.0.406.10  
Humidity:65.0%  
Test Distance:11.700m [K=1.0000]  
Remarks:



## AAI Figure

Test:U:0V I:0A P:0W PF:0.0000 Freq:0Hz Lamp Flux:313.505x1 lm		
NAME:	TYPE:	WEIGHT:
SPEC.:	DIM.: 100*100*90	SERIAL No.:
MFR.:	SUR.:3.14*0.035*0.035	Shielding Angle:



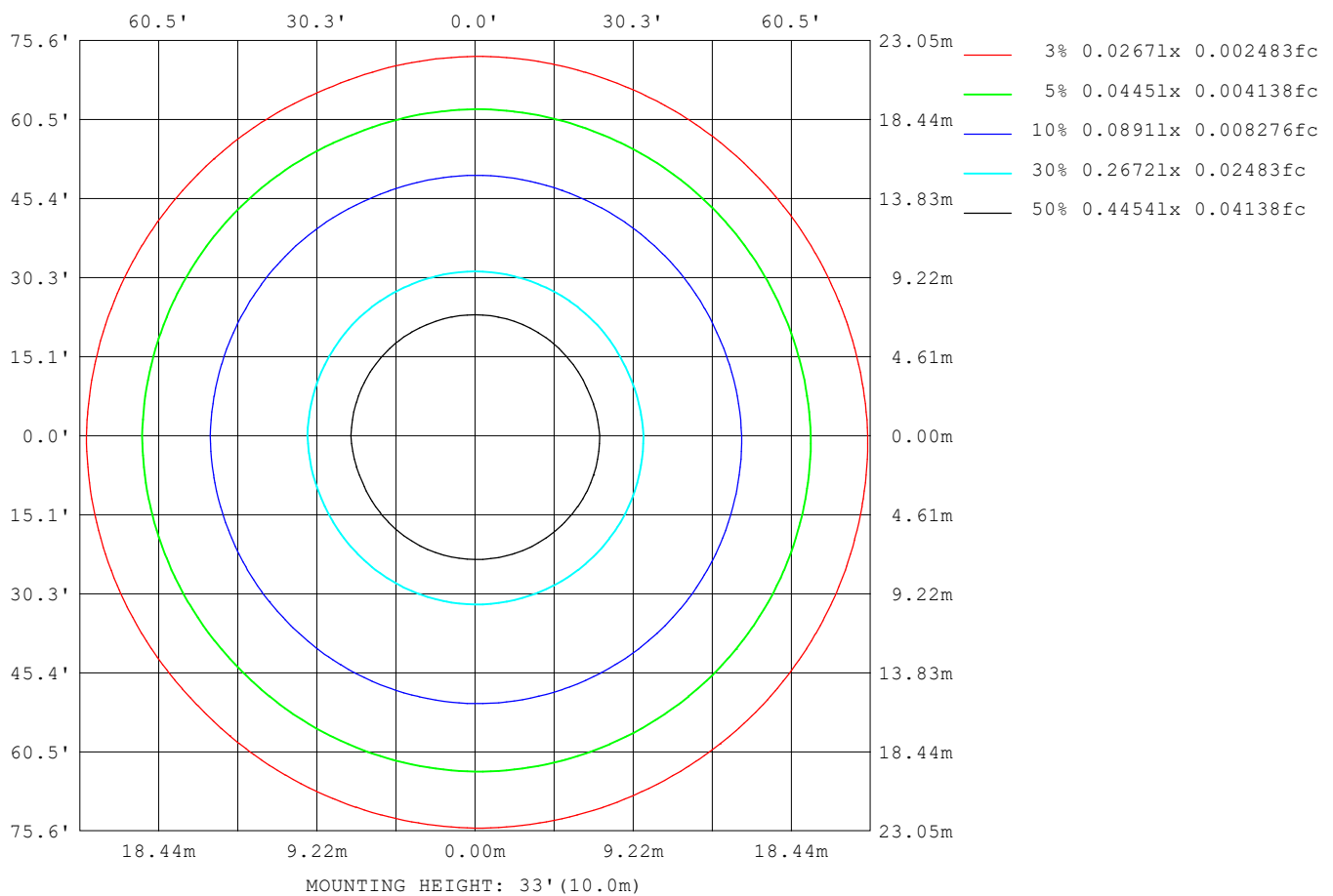
Note:The Curves indicate the illuminated area and the average illumination when the luminaire is at different distance.

C Range: 0 - 360DEG  
 C Interval: 22.5DEG  
 Test Speed: HIGH  
 Temperature:25.3DEG  
 Operators:  
 Test Date:2025-11-27

$\gamma$  Range: 0 - 90DEG  
 $\gamma$  Interval: 1.0DEG  
 Test System:EVERFINE GO-2000A\_V1 SYSTEM V2.0.406.10  
 Humidity:65.0%  
 Test Distance:11.700m [K=1.0000]  
 Remarks:

## ISOLUX DIAGRAM

Test:U:0V I:0A P:0W PF:0.0000 Freq:0Hz Lamp Flux:313.505x1 lm		
NAME:	TYPE:	WEIGHT:
SPEC.:	DIM.: 100*100*90	SERIAL No.:
MFR.:	SUR.:3.14*0.035*0.035	Shielding Angle:



C Range: 0 - 360DEG  
C Interval: 22.5DEG  
Test Speed: HIGH  
Temperature:25.3DEG  
Operators:  
Test Date:2025-11-27

$\gamma$  Range: 0 - 90DEG  
 $\gamma$  Interval: 1.0DEG  
Test System:EVERFINE GO-2000A\_V1 SYSTEM V2.0.406.10  
Humidity:65.0%  
Test Distance:11.700m [K=1.0000]  
Remarks:

## LED Avg.L Report

Test:U:0V I:0A P:0W PF:0.0000 Freq:0Hz Lamp Flux:313.505x1 lm		
NAME:	TYPE:	WEIGHT:
SPEC.:	DIM.: 100*100*90	SERIAL No.:
MFR.:	SUR.:3.14*0.035*0.035	Shielding Angle:

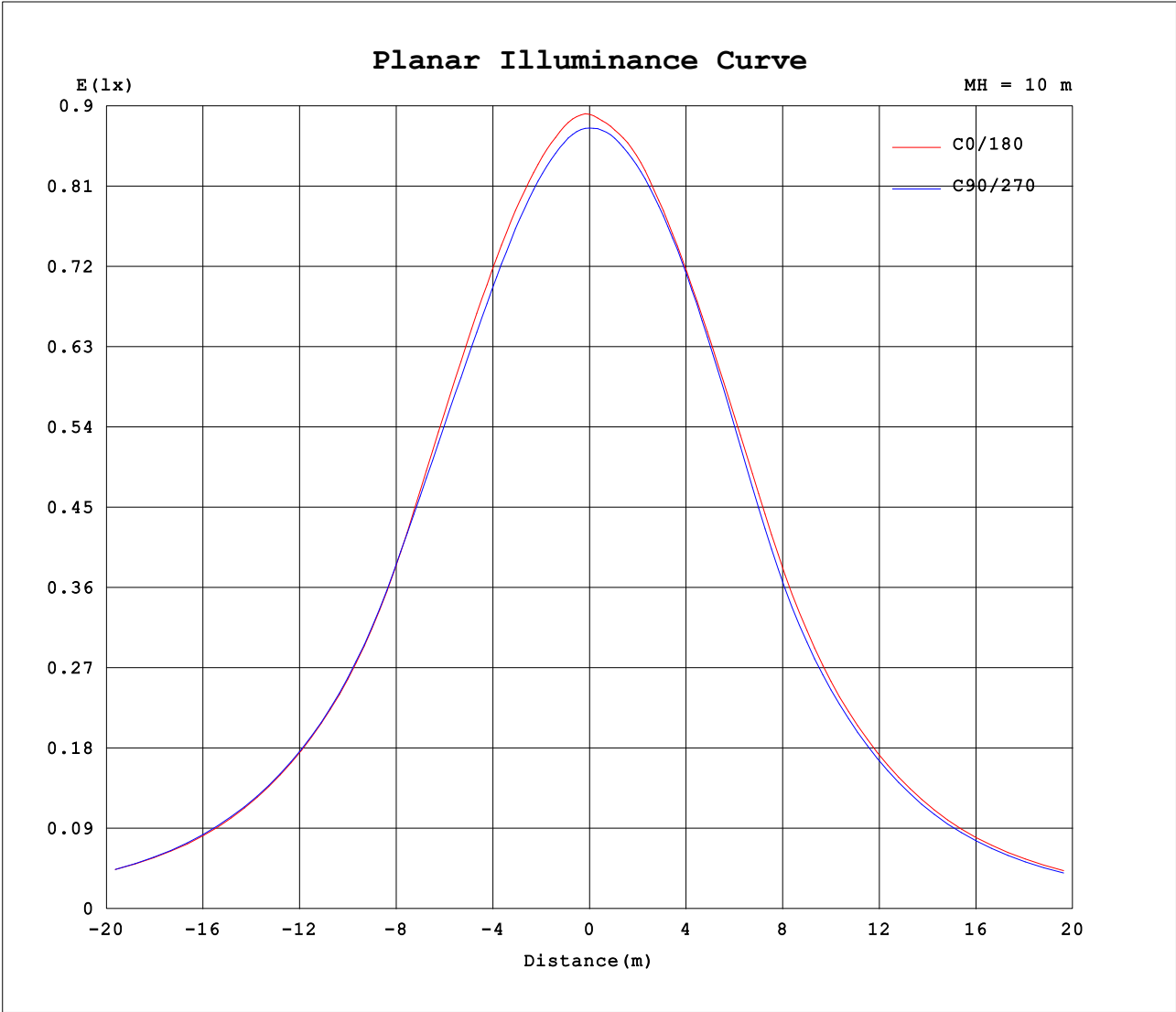
AvgL	cd/m2
L_0~180 (65) av	26732
L_0~180 (75) av	26509
L_0~180 (85) av	33541
L_90~270 (65) av	25719
L_90~270 (75) av	24435
L_90~270 (85) av	32078
L_45 (65) av	25775
L_45 (75) av	25023
L_45 (85) av	34172

Standard: GB/T 29293-2012

C Range: 0 - 360DEG  
C Interval: 22.5DEG  
Test Speed: HIGH  
Temperature:25.3DEG  
Operators:  
Test Date:2025-11-27

γ Range: 0 - 90DEG  
γ Interval: 1.0DEG  
Test System:EVERFINE GO-2000A\_V1 SYSTEM V2.0.406.10  
Humidity:65.0%  
Test Distance:11.700m [K=1.0000]  
Remarks:

Planar Illuminance Curve



C Range: 0 - 360DEG  
C Interval: 22.5DEG  
Test Speed: HIGH  
Temperature:25.3DEG  
Operators:  
Test Date:2025-11-27

γ Range: 0 - 90DEG  
γ Interval: 1.0DEG  
Test System:EVERFINE GO-2000A\_V1 SYSTEM V2.0.406.10  
Humidity:65.0%  
Test Distance:11.700m [K=1.0000]  
Remarks:

## LUMINOUS DISTRIBUTION INTENSITY DATA

Test:U:0V I:0A P:0W PF:0.0000 Freq:0Hz Lamp Flux:313.505x1 lm		
NAME:	TYPE:	WEIGHT:
SPEC.:	DIM.: 100*100*90	SERIAL No.:
MFR.:	SUR.:3.14*0.035*0.035	Shielding Angle:

Table--1

UNIT: cd

[illegible]

C Range: 0 - 360DEG  
C Interval: 22.5DEG  
Test Speed: HIGH  
Temperature:25.3DEG  
Operators:  
Test Date:2025-11-27

```

γ Range: 0 - 90DEG
γ Interval: 1.0DEG
Test System:EVERFINE GO-2000A_V1 SYSTEM V2.0.406.10
Humidity:65.0%
Test Distance:11.700m [K=1.0000]
Remarks:

```

## Photometric Data Table [cd]

G/C	0.0	22.5	45.0	67.5	90.0	112.5	135.0	157.5	180.0	202.5
0.0	89.08	88.69	88.24	87.92	87.53	87.10	86.82	86.46	86.08	85.69
3.0	89.18	88.67	88.32	87.86	87.50	86.97	86.61	86.15	85.72	85.45
6.0	89.16	88.60	88.15	87.65	87.30	86.95	86.55	86.14	85.74	85.49
9.0	89.09	88.57	88.02	87.49	87.18	86.93	86.68	86.36	85.92	85.92
12.0	89.18	88.58	88.01	87.51	87.16	86.79	86.59	86.41	85.39	85.08
15.0	89.36	88.72	88.02	87.52	87.18	86.53	86.54	86.43	85.41	85.12
18.0	89.62	88.76	88.13	87.46	87.15	86.57	86.50	86.44	85.51	85.16
21.0	89.67	88.80	88.11	87.31	87.06	86.67	86.60	86.37	85.52	85.38
24.0	89.71	88.78	88.05	87.21	86.91	86.55	86.43	86.26	85.34	85.28
27.0	89.35	88.65	87.69	87.00	86.65	86.27	86.02	85.98	85.93	85.65
30.0	88.56	88.14	87.20	86.69	86.25	85.75	85.43	85.33	85.01	84.72
33.0	87.05	86.92	86.26	85.79	85.21	84.84	84.37	84.09	83.60	83.53
36.0	84.22	84.54	84.31	84.09	83.52	83.11	82.29	81.68	81.57	81.55
39.0	80.47	81.10	81.21	81.18	80.68	80.07	78.90	78.17	77.82	78.61
42.0	76.56	77.27	77.41	77.40	76.91	76.19	75.07	74.45	74.02	74.70
45.0	72.86	73.56	73.81	73.69	73.34	72.53	71.48	70.88	72.11	71.00
48.0	69.41	70.07	70.27	69.99	69.79	68.95	67.92	67.62	68.55	67.58
51.0	65.67	66.35	66.82	66.49	66.17	65.30	64.32	64.00	64.65	63.70
54.0	61.47	62.36	62.80	62.59	62.15	61.29	60.16	59.86	60.34	59.11
57.0	56.61	57.60	58.09	57.95	57.58	56.53	55.39	55.11	55.45	54.25
60.0	51.80	52.67	52.99	52.81	52.40	51.36	50.21	50.17	50.60	49.45
63.0	47.25	47.82	47.92	47.66	47.36	46.28	45.30	45.53	45.95	44.74
66.0	42.40	42.90	42.92	42.61	42.39	41.33	40.36	40.71	40.94	39.55
69.0	37.40	37.72	37.56	37.15	36.90	35.90	35.00	35.42	35.68	34.43
72.0	32.67	32.76	32.38	31.81	31.49	30.65	30.01	30.45	30.46	29.46
75.0	27.80	27.96	27.51	26.95	26.60	25.81	25.26	25.34	24.89	23.61
78.0	22.13	22.42	21.95	21.78	21.30	20.60	20.01	19.45	18.79	17.55
81.0	16.41	16.73	16.36	16.44	15.69	15.41	14.66	14.02	13.44	13.15
84.0	13.42	13.38	13.00	12.46	11.59	11.87	11.78	11.24	10.72	10.62
87.0	10.52	10.98	10.93	10.23	8.632	9.904	9.839	9.101	8.407	8.422
90.0	6.830	8.265	8.728	8.015	5.576	7.972	7.723	7.010	6.409	6.254

G/C	225.0	247.5	270.0	292.5	315.0	337.5
0.0	88.24	87.92	87.53	87.10	86.82	86.46
3.0	88.15	87.90	87.61	87.22	86.96	86.57
6.0	88.42	88.07	87.80	87.33	87.00	86.59
9.0	88.81	88.24	87.96	87.57	87.12	86.57
12.0	88.98	88.48	88.28	87.83	87.37	86.78
15.0	89.15	88.84	88.63	88.12	87.64	87.06
18.0	89.30	89.12	88.93	88.42	87.97	87.35
21.0	89.41	89.24	89.03	88.62	87.93	87.59
24.0	89.12	88.91	88.81	88.37	87.78	87.60
27.0	88.51	88.11	88.01	87.60	87.24	87.16
30.0	87.18	86.60	86.58	86.12	86.03	85.97
33.0	84.91	84.11	84.02	83.89	83.93	84.11
36.0	81.56	80.43	80.47	80.39	80.65	81.21
39.0	77.64	76.40	76.49	76.43	76.88	77.39
42.0	73.94	72.78	72.83	72.83	73.38	73.89
45.0	70.24	69.23	69.43	69.24	69.80	70.49
48.0	66.79	65.69	66.06	65.72	66.25	67.04
51.0	62.83	61.74	62.12	61.86	62.46	63.34
54.0	58.31	57.10	57.66	57.41	58.09	59.17
57.0	53.27	52.19	52.85	52.76	53.44	54.49
60.0	48.39	47.30	48.02	48.09	48.88	49.91
63.0	43.47	42.25	42.98	43.09	44.11	45.36
66.0	38.09	36.86	37.56	37.86	38.89	40.44
69.0	32.89	31.70	32.34	32.68	33.81	35.49
72.0	28.11	26.92	27.41	27.89	29.14	30.91
75.0	22.72	21.77	21.97	22.61	24.00	25.87
78.0	17.16	16.56	16.73	17.21	18.53	20.15
81.0	13.56	13.65	13.77	14.06	14.66	15.35
84.0	11.37	11.73	11.77	12.28	12.52	12.73
87.0	8.837	9.035	9.019	9.689	10.16	10.23
90.0	6.332	6.211	5.954	7.131	7.723	7.766

C Range: 0 - 360DEG  
 C Interval: 22.5DEG  
 Test Speed: HIGH  
 Temperature: 25.3DEG  
 Operators:  
 Test Date: 2025-11-27

γ Range: 0 - 90DEG  
 γ Interval: 1.0DEG  
 Test System: EVERFINE GO-2000A\_V1 SYSTEM V2.0.406.10  
 Humidity: 65.0%  
 Test Distance: 11.700m [K=1.0000]  
 Remarks: